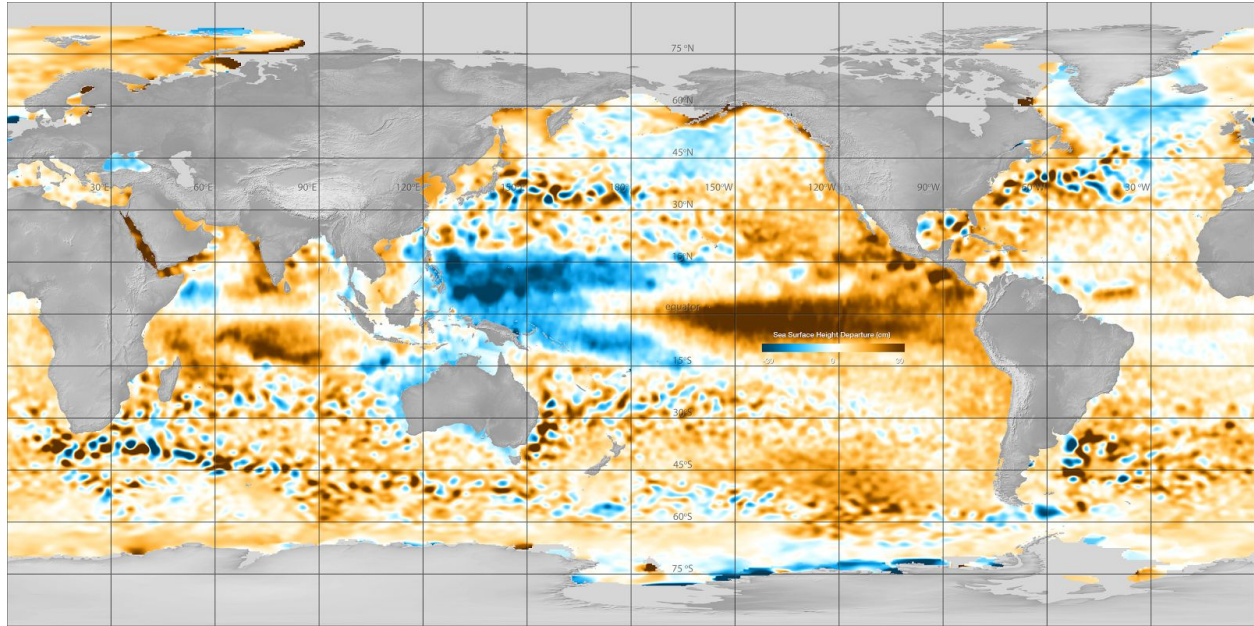
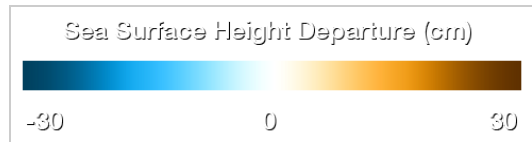


Interpreting Global Sea Level Data

Sea Surface Height Deviation, January 2016



Instructions: Examine the map above. Use the color bar at right to help with your interpretation.



Answer the following questions:

Question 1: The yellow and orange colors on the map represent areas where:

- A) the sea surface height is roughly the same as the historical mean height
- B) the water is warmer than normal
- C) sea levels are rising
- D) the sea surface height is higher than the historical mean height

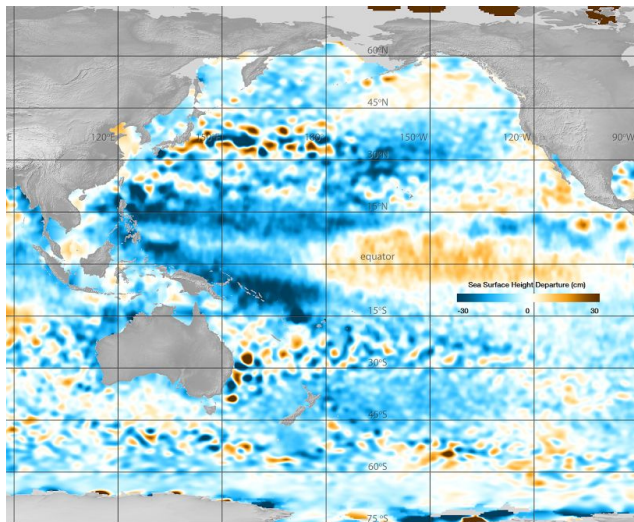
Question 2: In January 2016, what was the approximate SSHD off the coast of Los Angeles, USA?

- A) 0.2 meters
- B) 0.1 meters
- C) -0.1 meters
- D) -0.4 meters

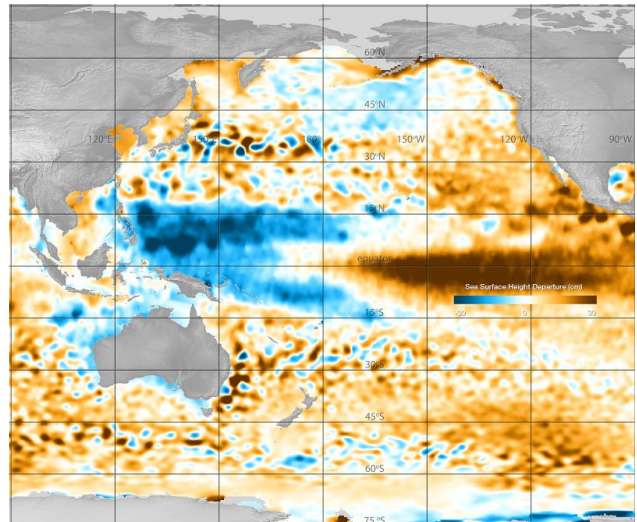
Question 3: Is the sea level in the Western Pacific generally higher or lower than the mean sea level? _____

Question 4: Propose an explanation for the differences in sea surface height between the Eastern and Western Pacific in September 2016.

Question 5: Next, compare the data maps below from December 1993 and December 2016. What is a major difference between the two maps? Propose an explanation.



Sea Surface Height Deviation, January 1993



Sea Surface Height Deviation, January 2016